



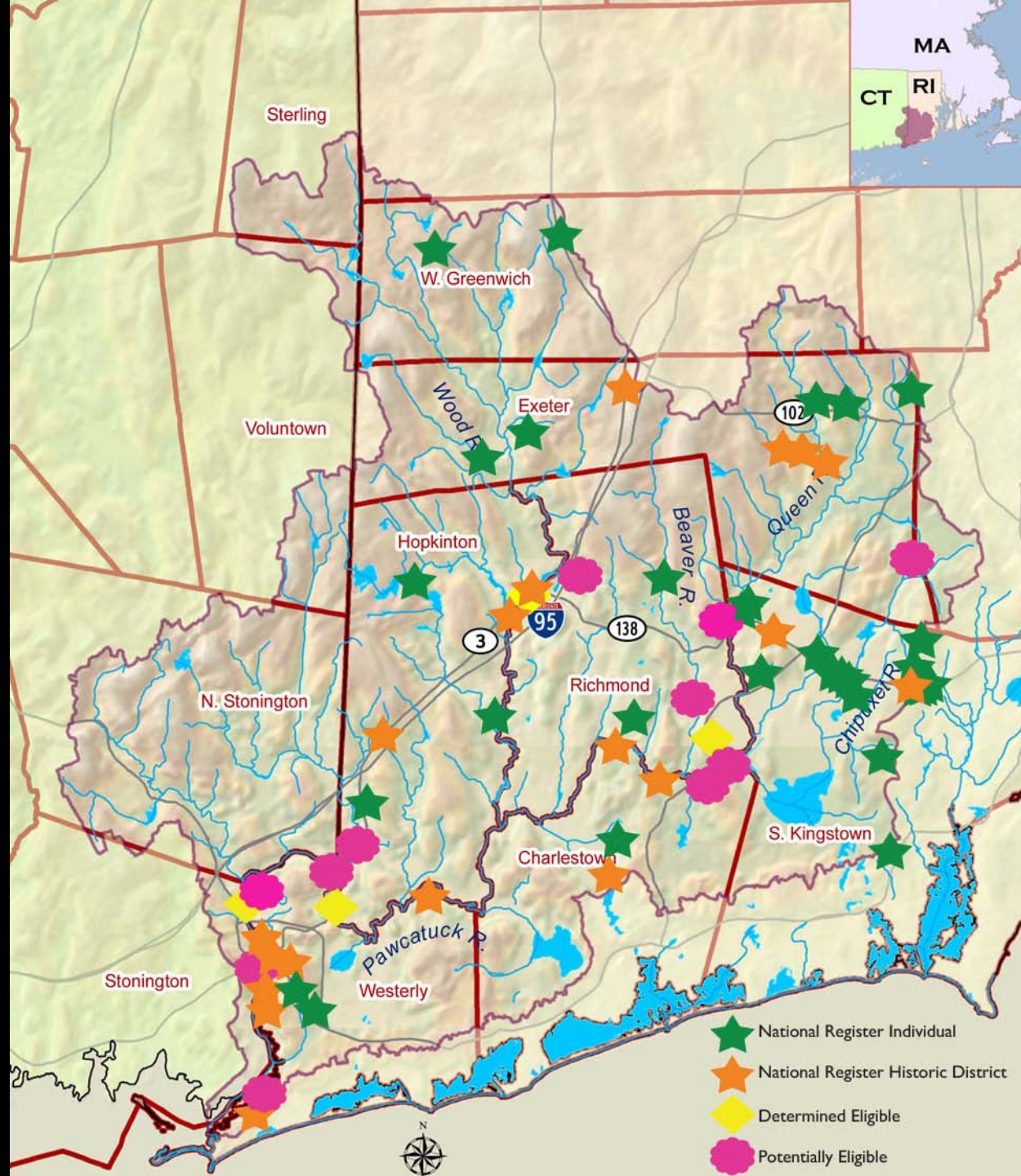
RI Historical Preservation & Heritage Commission

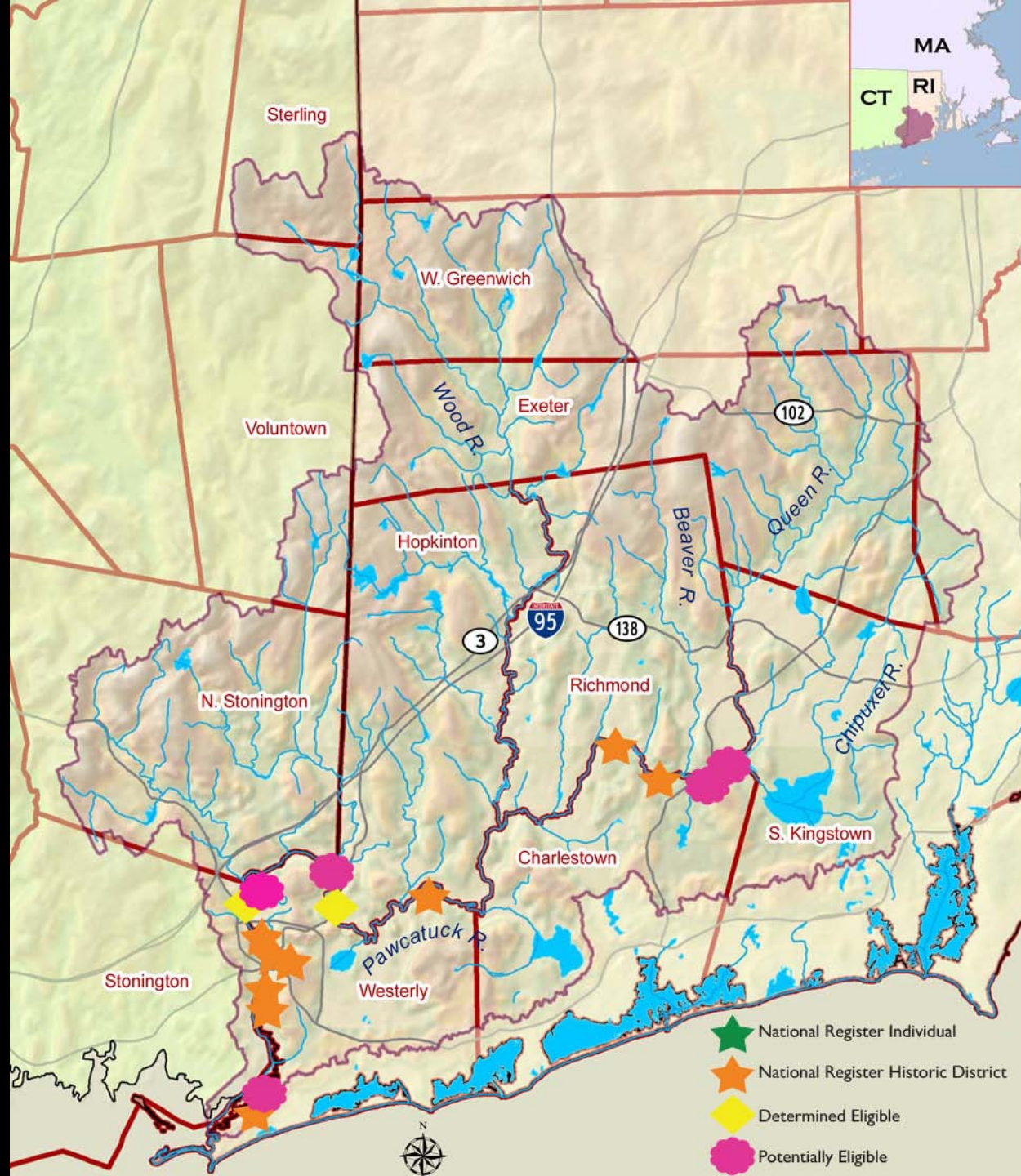
Jeff Emidy, Deputy Director

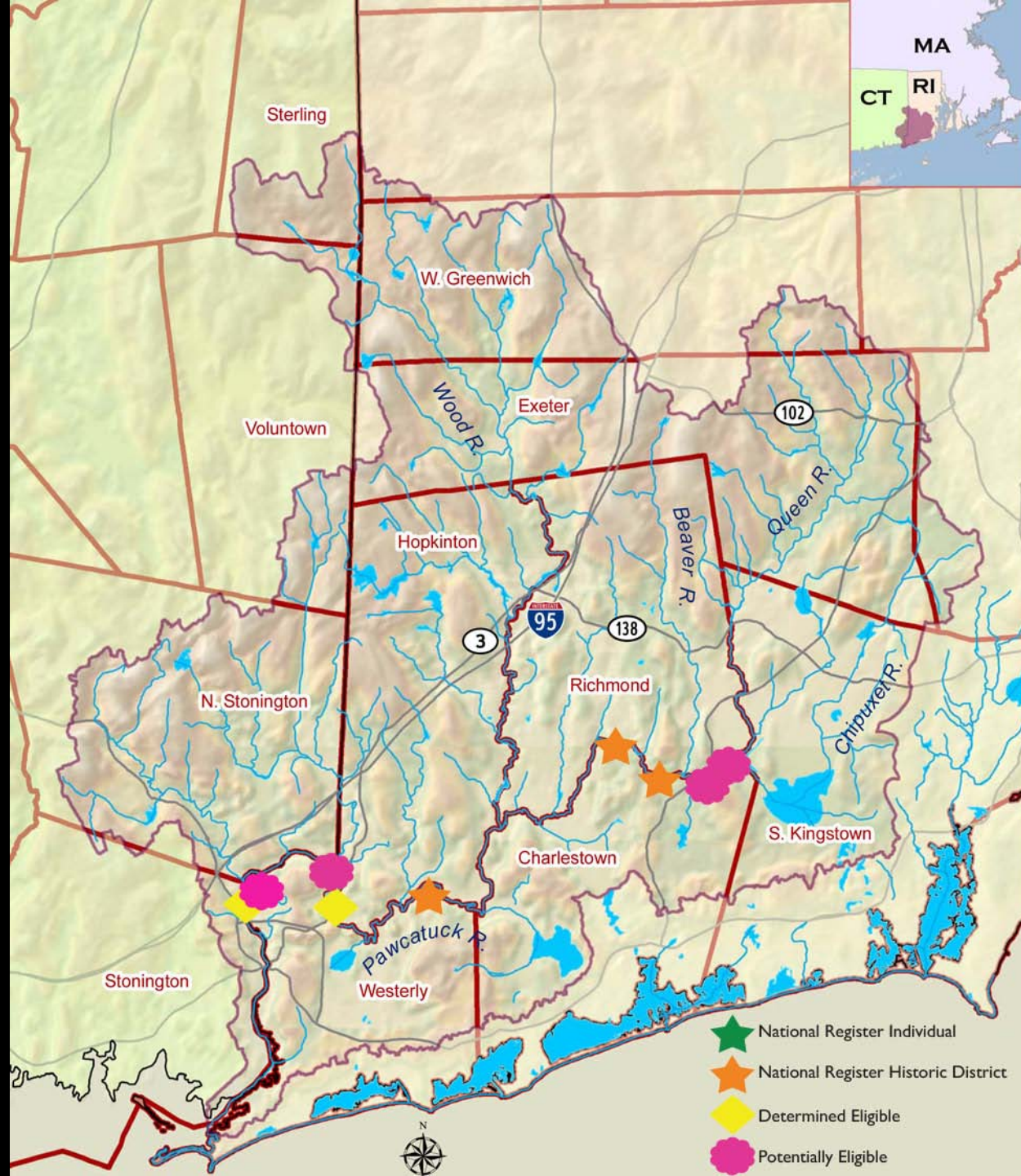
Jeffrey.Emidy@preservation.ri.gov

222-4134























Proposed View

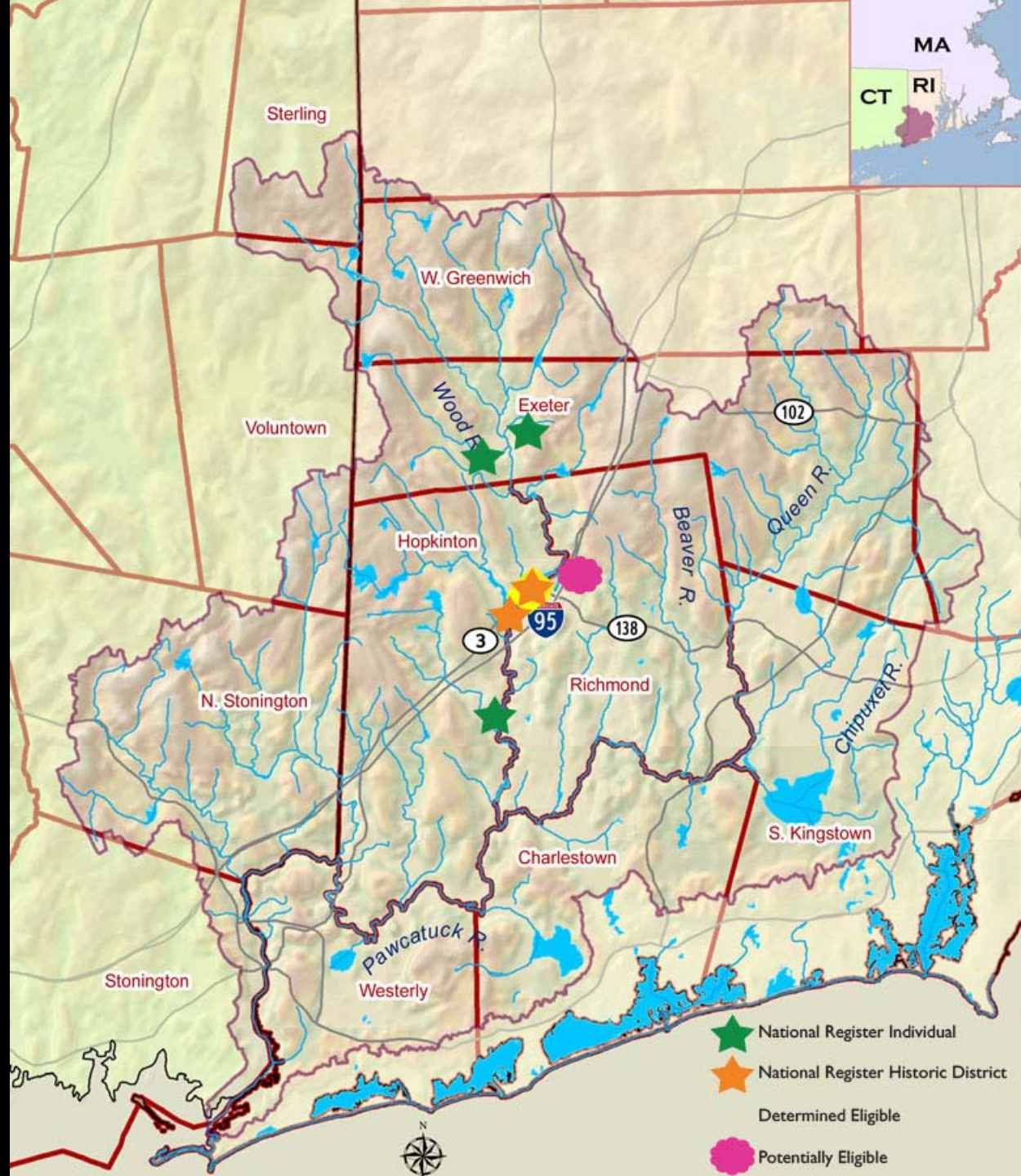


Existing View



Conceptual View at Center of Spillway
WPWA Horseshoe Falls Dam Fish Ladder

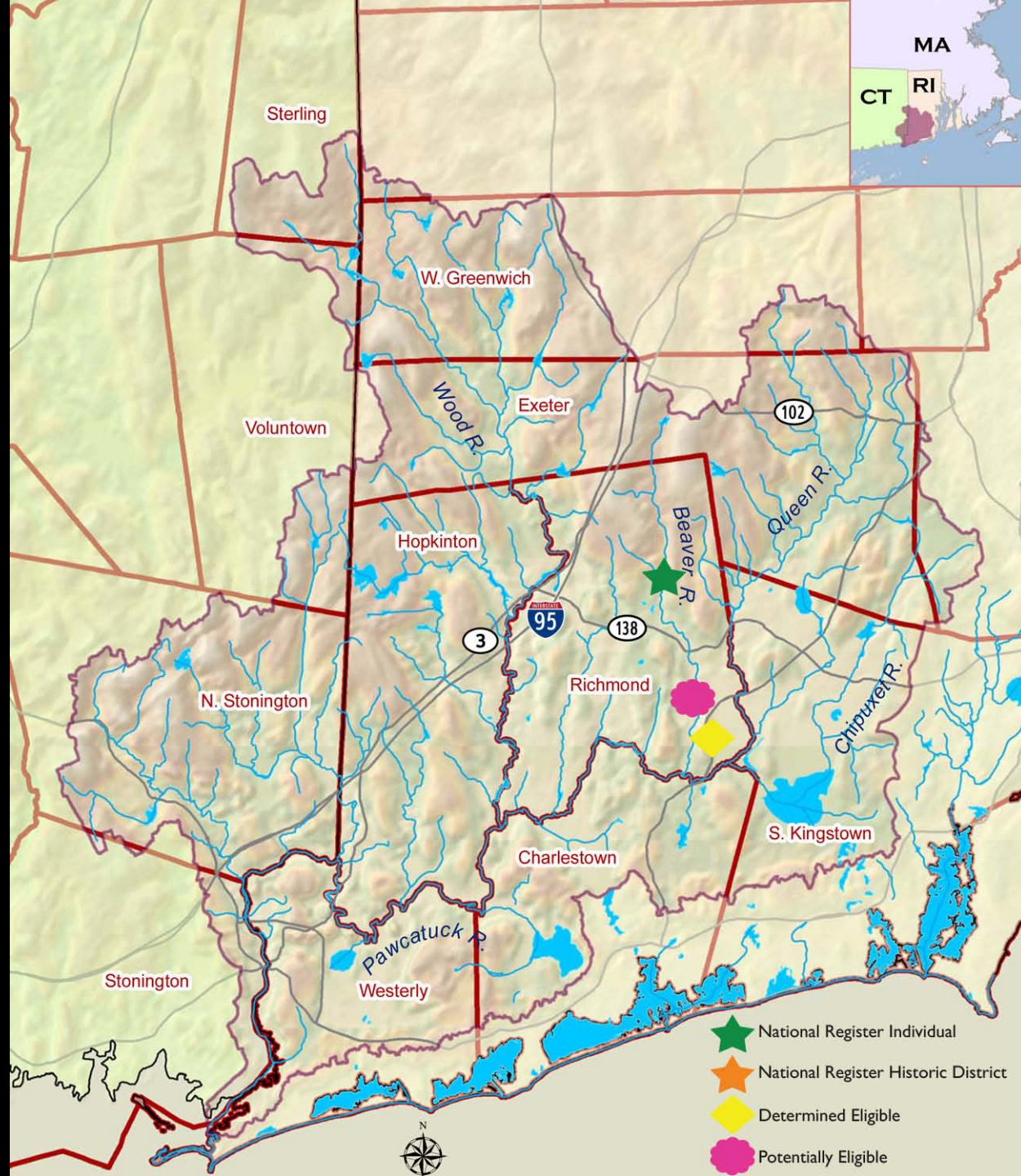










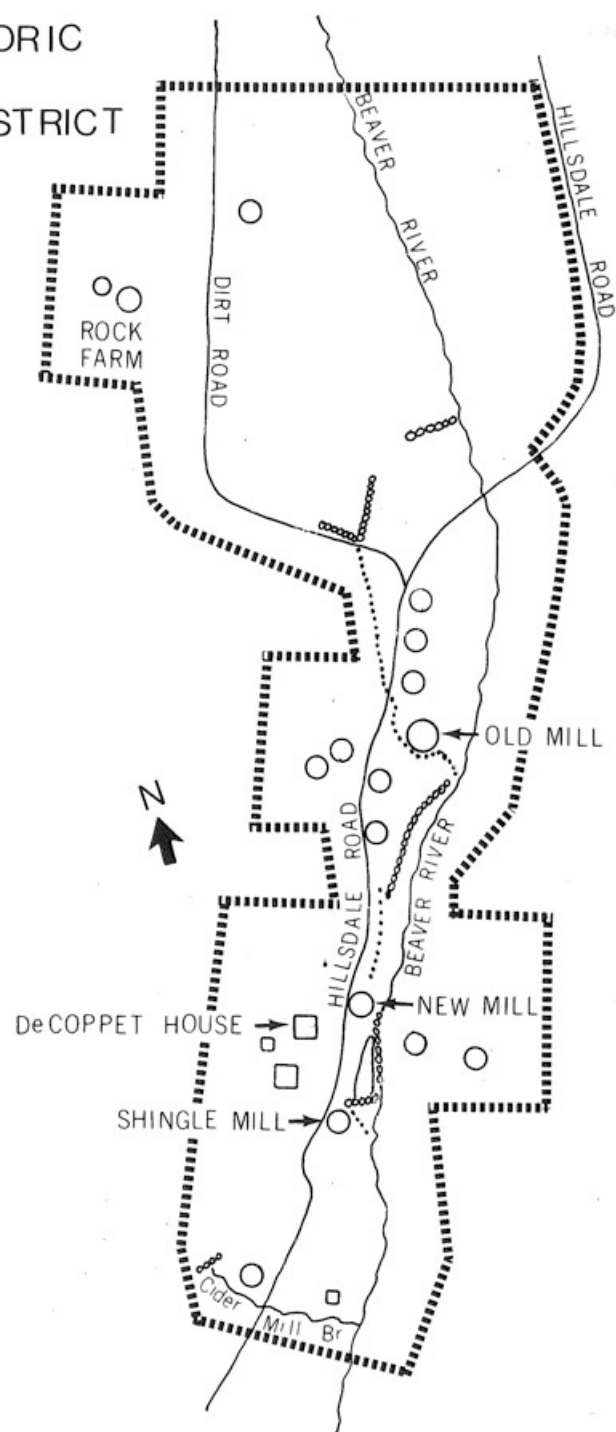


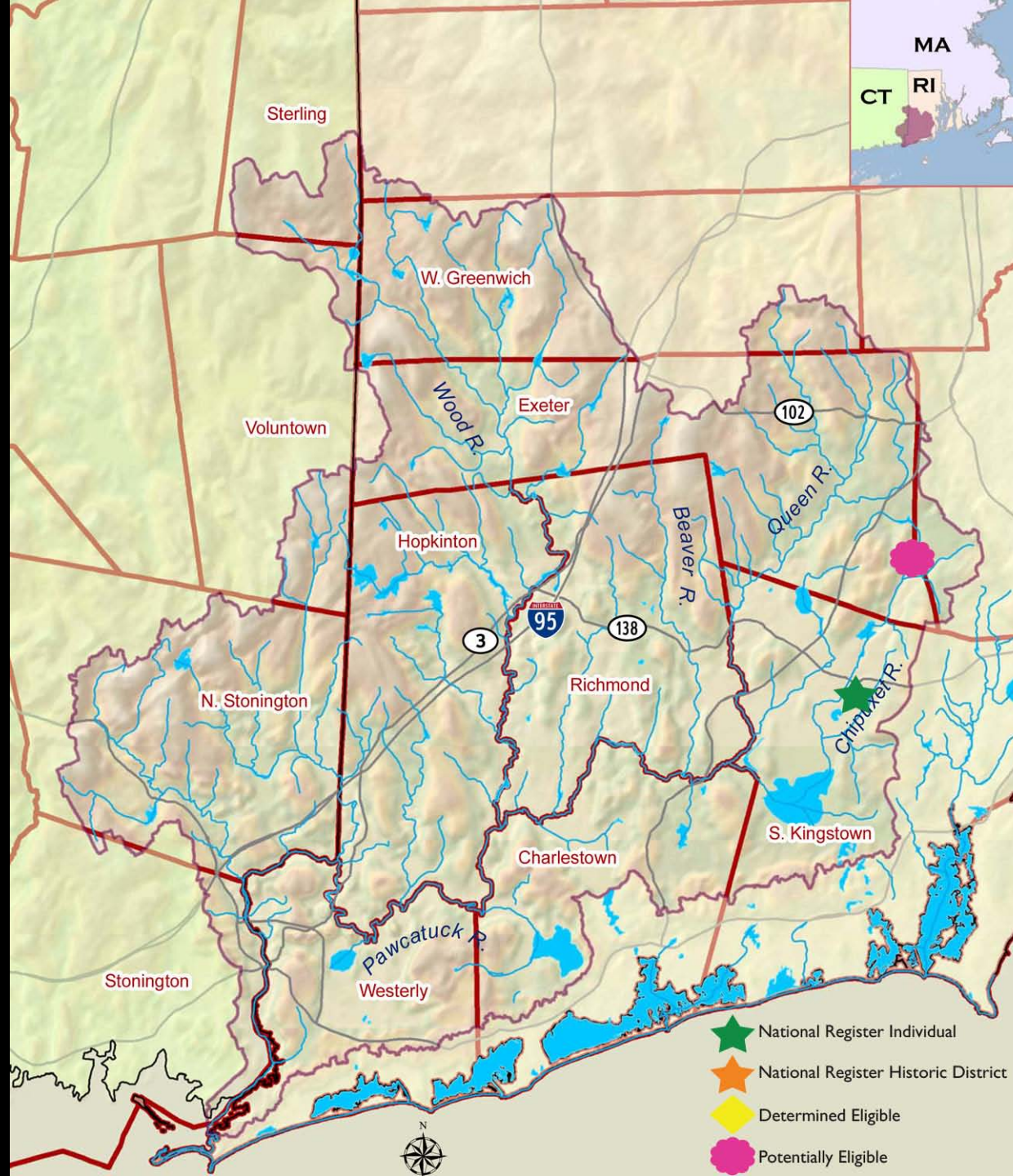


HILLSDALE HISTORIC
and
ARCHEOLOGICAL DISTRICT
RICHMOND, R.I.

- STANDING STRUCTURE
- FOUNDATION
- ⊖ DAM
- RACE

0 200 400 800 feet







10366



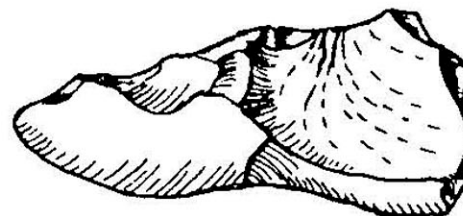
10239



10259



10250



10327







